

**Skills for Employment Investment Program (SEIP) Project
Probashi Kallyan Bhaban (Level-16)
71-72 Old Elephant Road, Eskaton Garden
Dhaka-1000**

Shopping for Works

Package No: W-IBA-01

**Package Name: Renovation Works (Civil and Plumbing Works) of Classrooms,
1st Floor, Library Building for SEIP Project, IBA.**



SHOPPING FOR WORKS
REQUEST FOR QUOTATION (RFQW)

Project Title: Skills for Employment Investment Program (SEIP)

Source of Funding: **ADB**

Contract Ref: FD/SEIP/W-IBA-01/573/2021/917

Date: 22 August 2021

To: _____

Sir/Madam:

1. The Skills for Employment Investment Program (SEIP) Project (Employer) hereby requests you to submit a quotation for the Renovation works of Classrooms, 1st Floor, Library Building for SEIP Project, IBA including:

1. Dismantling Works
2. Civil Works
3. Floor Finish Works
4. Paint Works
5. Renovation Works
6. Sanitary & Plumbing Works

If you, however, have been associated with the firm that prepared the design, specifications, or engaged in the preparation of the Project or firm that will provide supervision of the Works, you shall be disqualified.

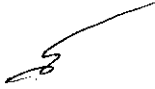
To assist in the preparation of your price quotation, the necessary specifications, bill of quantities and drawings, form for submitting the quotation and a draft contract form are enclosed. You are advised to visit the site of the works at your own expense, and obtain necessary information for preparing your quotation.

2. You shall submit one original of the Price Quotation with the Form of Quotation, and clearly marked "Original". In addition, you shall also submit one copy marked as "COPY".

3. Your quotation in the attached format should be signed, sealed in an envelope and addressed to and delivered at the following address:

Purchaser's Address: Attn: Md. Zahidul Haque
Executive Project Director
Probashi Kallyan Bhaban (Level 16)
71-72 Old Elephant Road, Eskaton Garden, Dhaka-1000.
Telephone: 55138753-5 (PABX), Fax: 55138752

4. You shall have the nationality of an eligible country, in accordance with Section 4 (Eligible Countries). You shall be deemed to have the nationality of a country if you are a citizen or is constituted, incorporated, or registered, and operates in conformity with the provisions of the laws of that country.



This criterion shall also apply to the determination of the nationality of proposed subcontractors / suppliers or manufacturers for any part of the Contract including related services.

You must have experience as a prime contractor in the construction of at least **one work** of the nature and complexity equivalent to the works included in this Request for Quotation with a minimum value of **BDT 80.00 Lakh within last 03 years** in a single contract, years will be counted back from the date of issuing RFQW. In support of experience, Bidder shall have to submit **Satisfactory Performance Certificate(s)** from the Client in their letter head pad. The certificates shall contain Client's full mailing address, e-mail address, website address, fax number and phone number for the convenience of authentication. In case of the work done under PWD, the certifying and authenticating authority shall be the concerned Executive Engineer, under whom the work has been executed. In case of the work done under any Govt./ Semi Govt./Autonomous bodies/ Organization other than PWD the certifying authority shall be an officer not below the rank of Executive Engineer.

You have to provide evidence of availability of financial resources to successfully complete the works in the amount of **BDT 80.00 lakh**. Otherwise, you will not be considered further.

5. You shall submit only one quotation. Your quotation must be typed or written in indelible ink and shall be signed by you or your authorized representative. Without a signature in your Form of Quotation, your quotation will not be considered further. Your proposal should comprise the following things

- (a) the signed Form of Quotation.
- (b) the signed priced Bill of Quantities;
- (c) Written confirmation authorizing the signatory of the Quotation including National ID to submit the quotation;
- (d) Copy of Valid Trade license;
- (e) Documentary evidence of Tax Identification Number (TIN) and Value Added Tax (VAT) as a proof of taxation obligations;
- (f) documentary evidence as stated under Clause 4 establishing the minimum qualifications of the Bidder required to be met for due performance of the Works and physical services under the Contract;
- (g) evidence of availability of financial resources to successfully complete the works.

6. In evaluating the quotations, the Employer will adjust for any arithmetical errors as follows:

- (a) where there is a discrepancy between amounts in figures and in words, the amount in words will govern;
- (b) where there is a discrepancy between the total price in the Bill of Quantities or the quoted amount indicated in the Form of Quotation, the total price in the Bill of Quantities shall govern;
- (c) where there is a discrepancy between the unit rate and the line item total resulting from multiplying the unit rate by the quantity, the unit rate as quoted will govern; and
- (d) if you refuse to accept the correction, your quotation will be rejected.

7. Your quotation shall be valid for a period of Sixty (60) days from 2 September 2021.

8. Your quotation in duplicate and written in English language shall be for the whole works and based on the unit and total price indicated in the filled-in "Bill of Quantities". Currency of quoted prices and payment shall be Bangladesh Taka. The quotation shall include all duties, local taxes and other levies payable by the contractor in accordance with the local laws. In case of any discrepancy between the original and duplicate, the original shall prevail.

9. The Employer will award the contract to the Contractor whose quotation has been determined to be substantially responsive to this Request for Quotation and who has offered the lowest evaluated price quotation. A quotation is not substantially responsive if it contains material deviations or reservations to the terms, conditions, and specifications in this Request for Quotation, and it will not be considered

further. The Employer will evaluate and compare only the quotations determined to be substantially responsive.

10. If you withdraw your quotation during the validity period and/or refuse to accept the award of a contract when and if awarded, then you will be excluded from the list of contractors for the project for two years.

11. The contract will be governed by the terms and conditions of the attached Form of Contract.

12. Your quotation including Form of Quotation and filled-in Section 2 "Bill of Quantities" should be submitted by 2 September 2021 at 3.00 PM.

13. The bidder whose quotation has been accepted will be notified of the award of contract through the Letter of Acceptance issued by the Employer within 60 days from the date of submission of quotation.

14. The Employer intends to apply funds from the Asian Development Bank (ADB) for eligible payments under the Contract resulting from this RFQW.

15. Under ADB's Anticorruption Policy bidders shall observe the highest standard of ethics during the procurement and execution of such contracts. ADB will reject a proposal for award, and will impose sanctions on parties involved, if it determines that the bidder recommended for award or any other party, has engaged in corrupt, fraudulent, collusive, or coercive practices in competing for, or in executing, the Contract. **At the time of submission of your quotation, you should not be in ADB's sanctions list.**

Sincerely,


22.08.2021

(Md. Kamrul Alam)

Assistant Executive Project Director
Skills for Employment Investment Program (SEIP) Project

SECTION 1 - SPECIFICATIONS

Handwritten mark

For all items: **Measurement:** The measurement shall be on unit wise as noted in the BOQ for completed and acceptable work up to the satisfaction of the Engineer. **Basis of payment:** Payment shall be given as per unit contract price as mentioned in the BOQ. The payment will be constituted full compensation for labor, materials, equipment etc. and including charges necessary to complete the work

SL.	DESCRIPTION
1	Dismantling Works
	Removal and dismantling of the following brick work, board partition, glass door, door frame, 3/4" thick cement plaster from the wall, mosaic, electrical fan, electrical light etc. with adequate precaution and protection against damage of connected members, walls, floors and adjoining parts of the building including necessary scaffolding, cleaning & straightening required rebar's in position, cutting and removing excess re-bar if any, removing the dismantled materials / debris (anywhere) from the site after inventory, mending good any damages to the building & surrounding as per instruction of the Engineer. [Debris/salvaged materials will be the property of Contractor and to be removed from the site at no cost of University]
	125 mm thick brick work with plaster and lintel
	100mm dry Partition
	10mm Tempered Glass Door
	Mosaic Floor
	5'-0"x7'-0" size (APP) wooden door frame with door shutter.
	Electrical light and Fan
	CIVIL WORKS
2	125mm BRICK WORK
	125 mm brick works with first class bricks with cement sand (F.M. 1.2) mortar (1:4) and making bond with connected walls including necessary scaffolding, raking out joints, cleaning and soaking the bricks for at least 24 hours before use and washing of sand, curing at least for 7 days in all floors including cost of water, electricity and other charges etc. all complete and accepted by the Engineer-in-charge. [All sand must be chemically washed to remove dusts and salts]
3	PLASTER WORK
	Minimum 12 mm thick cement sand (F.M. 1.2) plaster (1:4) with fresh cement to both inner and outer surface of wall, finishing the corner and edges including washing of sand, cleaning the surface, curing at least for 7 days, cost of water, electricity, scaffolding and other charges etc. all complete in all respect as per drawing and accepted by the Engineer-in-charge. [All sand must be chemically washed to remove dusts and salts]
4	RCC WORKS in 1:2:4
	Reinforced cement concrete works with minimum cement content relates to mix ratio 1:2:4 having minimum fcr = 24 MPa, satisfying a specified compressive strength fc= 19 MPa at 28 days on standard cylinders as per standard practice of Code ACI/BNBC/ASTM, cement conforming to BDS EN-197-1-CEM-I, 52.5N (52.5 MPa) / ASTM-C 150 Type - I, best quality sand [50% quantity of best local sand (F.M. 1.2) and 50% quantity of Sylhet sand or coarse sand of equivalent F.M. 2.2] and 20 mm down well graded picked jhamabrick chips conforming to ASTM C-33 including breaking chips and screening, making and placing shutter in position maintaining true to plumb, making shutter water-tight properly, placing reinforcement in position; mixing in standard mixer machine with hopper fed by standard measuring boxes or mixing in batching plant, casting in forms, compacting by vibrator machine and curing at least for 28 days, removing centering-shuttering after specified time approved; including cost of water, electricity, laboratory testing charges of materials and concrete cylinders as required, cost of all materials and other charges etc. all complete, approved and accepted by the Engineer-in-charge. (Rate is excluding the cost of reinforcement and its fabrication, placing, binding etc. and the cost of shuttering & centering)
	RCCLINTELWORK To be made inside brick walls for door fixing purpose
	RCC Counter for Sanitary Connections To be made over brick walls
5.0	DEFORMED BAR

	<p>Reinforcing works with Grade 400 (RB 400 /RB 400W: complying BDS ISO 6935-2:2006) ribbed or deformed bar produced and marked according to Bangladesh standard, with minimum yield strength, f_y (R_{eH})= 400 MPa but f_y not exceeding 450 MPa and whatever is the yield strength within allowable limit as per BNBC/ ACI 318, the ratio of ultimate tensile strength f_u to yield strength f_y, shall be at least 1.25 and minimum elongation after fracture and minimum total elongation at maximum force is 16% and 8% respectively : up to ground floor.</p>
6.0	<p>Mass concrete (1:2:4) work</p>
	<p>Mass concrete (1:2:4)in foundation or in floor with cement, sand (F.M. 1.2) and picked jhama brick chips including breaking of chips, screening, mixing, laying, compacting to required level and curing for at least 7 days including the supply of water, electricity, costs of tools & plants and other charges etc. all complete and accepted by Engineer-in-charge. [All sand must be chemically washed to remove dasts and salts]</p>

SECTION 2: BILL OF QUANTITIES



SL.	DESCRIPTION	Quantity	Unit	Rate BDT	Amount BDT
A.	Dismantling Works				
	Labor charge for removal and dismantling of the following brick work, board partition, glass door, door frame, 3/4" thick cement plaster from the wall, mosaic, electrical fan, electrical light etc. with adequate precaution and protection against damage of connected members, walls, floors and adjoining parts of the building including necessary scaffolding, cleaning & straightening required rebar's in position, cutting and removing excess re-bar if any, removing the dismantled materials / debris (anywhere) from the site after inventory, mending good any damages to the building & surrounding as per instruction of the Engineer. [Debris/salvaged materials will be the property of Contractor and to be removed from the site at no cost of University]				
1.0	125 mm thick brick work with plaster and lintel	40.00	Sqm		
2.0	100mm dry Partition	250.00	Sqm		
3.0	10mm Tempered Glass Door	7.00	Each		
4.0	Mosaic Floor	522.00	Sqm		
5.0	5'-0"x7'-0" size (APP) wooden door frame with door shutter.	2.00	Each		
6.0	Electrical light and Fan	150.00	Each		
B.	CIVIL WORKS				
	5" BRICK WORK				
7	125 mm brick works with first class bricks with cement sand (F.M. 1.2) mortar (1:4) and making bond with connected walls including necessary scaffolding, raking out joints, cleaning and soaking the bricks for at least 24 hours before use and washing of sand, curing at least for 7 days in all floors including cost of water, electricity and other charges etc. all complete and accepted by the Engineer-in-charge. [All sand must be chemically washed to remove dusts and salts]	305.50	Sqm		
	PLASTER WORK				
8	Providing minimum 12 mm thick cement sand (F.M. 1.2) plaster (1:4) with fresh cement to both inner and outer surface of wall, finishing the corner and edges including washing of sand, cleaning the surface, curing at least for 7 days, cost of water, electricity, scaffolding and other charges etc. all complete in all respect as per drawing and accepted by the Engineer-in-charge. [All sand must be chemically washed to remove dusts and salts]	891.26	Sqm		
	RCC WORKS in 1:2:4				
	Reinforced cement concrete works with minimum cement content relates to mix ratio 1:2:4 having minimum fcr = 24 MPa, satisfying a specified compressive strength $f_c = 19$ MPa at 28 days on standard cylinders as per standard practice of Code ACI/BNBC/ASTM, cement conforming to BDS EN-197-				

SL.	DESCRIPTION	Quantity	Unit	Rate BDT	Amount BDT
	1-CEM-I, 52.5N (52.5 MPa) / ASTM-C 150 Type – I, best quality sand [50% quantity of best local sand (F.M. 1.2) and 50% quantity of Sylhet sand or coarse sand of equivalent F.M. 2.2] and 20 mm down well graded picked jhamabrick chips conforming to ASTM C-33 including breaking chips and screening, making and placing shutter in position maintaining true to plumb, making shutter water-tight properly, placing reinforcement in position; mixing in standard mixer machine with hopper fed by standard measuring boxes or mixing in batching plant, casting in forms, compacting by vibrator machine and curing at least for 28 days, removing centering-shuttering after specified time approved; including cost of water, electricity, laboratory testing charges of materials and concrete cylinders as required, cost of all materials and other charges etc. all complete, approved and accepted by the Engineer-in-charge. (Rate is excluding the cost of reinforcement and its fabrication, placing, binding etc. and the cost of shuttering & centering)				
9.0	RCC LINTEL WORK To be made inside brick walls for door fixing purpose	4.67	Cum		
10.0	RCC Counter for Sanitary Connections To be made over brick walls	1.75	Cum		
	DEFORMED BAR				
11.0	Grade 400 (RB 400 /RB 400W: complying BDS ISO 6935-2:2006) ribbed or deformed bar produced and marked according to Bangladesh standard, with minimum yield strength, f_y (ReH)= 400 MPa but f_y not exceeding 450 MPa and whatever is the yield strength within allowable limit as per BNBC/ ACI 318, the ratio of ultimate tensile strength f_u to yield strength f_y , shall be at least 1.25 and minimum elongation after fracture and minimum total elongation at maximum force is 16% and 8% respectively : up to ground floor.	265.00	Kg		
	WASHROOM AREA RAISED FLOOR				
12.0	Mass concrete (1:2:4)in foundation or in floor with cement, sand (F.M. 1.2) and picked jhama brick chips including breaking of chips, screening, mixing, laying, compacting to required level and curing for at least 7 days including the supply of water, electricity, costs of tools & plants and other charges etc. all complete and accepted by Engineer-in-charge. [All sand must be chemically washed to remove dusts and salts]	5.90	Cum		
C.	FLOOR FINISH WORKS				
	RUSTIC FLOOR TILES as par design				
13	Supplying, fitting and fixing country made homogeneous matt finished/ rustic floor tiles complying BDS ISO 13006: 2015, water absorption $\leq 0.5\%$, modulus of rupture (MOR) ≥ 27 N/mm ² , irrespective of color &/or design, with cement sand (F.M. 1.2) mortar (1:4) base and raking out the joints with white cement including cutting and laying the tiles in proper way and finishing with care etc. all complete and accepted by the Engineer-in-charge. (Cement:	761.70	Sqm		

SL.	DESCRIPTION	Quantity	Unit	Rate BDT	Amount BDT
	CEM-II/A-M) In ground floor				
	WASHROOM FLOOR TILES as par design				
14	Supplying, fitting and fixing country made rustic or matt finished wall tiles complying BDS ISO 13006: 2015, irrespective of color &/or design , with 20 mm thick cement sand (F.M. 1.2) mortar (1:3) base and raking out the joints with white cement including cutting, laying and hire charge of machine and finishing with care etc. including water, electricity and other charges complete in all respect and accepted by the Engineer-in-charge. (Cement: CEM-II/A-M). In ground floor	42.00	Sqm		
	WALL TILES as par design				
15	Supplying, fitting and fixing country made rustic or matt finished floor tiles complying BDS ISO 13006: 2015, irrespective of color &/or design , with 20 mm thick cement sand (F.M. 1.2) mortar (1:3) base and raking out the joints with white cement including cutting, laying and hire charge of machine and finishing with care etc. including water, electricity and other charges complete in all respect and accepted by the Engineer-in-charge. (Cement: CEM-II/A-M). In ground floor	95.00	Sqm		
	18mm THICK GRANITE				
16	Granite stone flooring with 18 mm thick Italian or equivalent origin granite stone of approved quality, texture and size over 25 mm thick cement sand (F.M. 1.2) mortar (1:2) including. placing cement slurry below the stone, cutting the granite stone to desired size, grinding and finishing the edges, setting in position in proper level, filling the gaps with white cement and colouring pigments including supplying all necessary equipments/materials and finishing the top by pumice stone and necessary auxiliary materials and water, electricity and other charges complete in all respect and accepted by the Engineer-in-charge. [All sand must be chemically washed to remove dusts and salts]	11.00	Sqm		
	38mm Thick Patent Stone Works				
17	38 mm thick artificial patent stone (1:2:4)flooring with NCF; cement, best quality coarse sand (50% quantity of Sylhet sand or coarse sand of equivalent F.M. 2.2 and 50% best quality local sand of FM 1.2) and 12 mm down well graded brick chips including breaking chips, screening, laying the concrete in alternate panels, compacting and finishing the top with neat cement and curing at least for 7 days in all floors including cost of water, electricity and other charges etc. all complete and accepted by the Engineer-in-charge. [All sand must be chemically washed to remove dusts and salts]	254.49	Sqm		
D.	PAINT WORKS				
	PLASTIC PAINT (Berger/equivalent)				

SL.	DESCRIPTION	Quantity	Unit	Rate BDT	Amount BDT
18	Interior super premium acrylic emulsion painting (odorless) of approved best quality and colour delivered from authorized local agent of the manufacturer(Berger breath easy or equivalent brand) in a sealed container; applying to interior wall and ceiling with surface preparation including cleaning drying, making free from dirt, grease, wax, removing all chalked and scaled materials, fungus, mending good the surface defects using sand paper and necessary scaffolding; applying 1 coat of interior sealer of specified brand on prepared surface; then applying 1 coat of interior putty of specified brand for levelling, spot filling, crack filling and cutting by sand paper/zero water paper, finally applying 2 coats of interior emulsion paint by spreading with brush/roller/spray machine & necessary scaffolding etc. upto desired finishing, elapsing specified time for drying or recoating; all complete in all floors accepted by the Engineer-in-charge.	1,986.00	Sqm		
	DUCO PUTTY AND PLASTIC PAINT (Berger/equivalent)				
19	Painting work on WOODEN partition of approved color and quality over a coat of primer seal including cleaning the surface, rubbing by pumice stone, sand papering, synthetic putty and necessary scaffolding for all floors etc. all complete as per direction and full satisfaction of the Consultant / Project-in-Charge.	499.00	Sqm		
	TEXTURE PAINT				
20	Textured paint of approved best quality and colour delivered from authorized local agent of the manufacturer in a sealed container; applying to interior wall and ceiling including surface preparation including cleaning drying, making free from dirt, grease, wax, removing all chalked and scaled materials, fungus if required must be treated with fungicidal solution, mending good the surface defects using sand paper and necessary scaffolding; applying 1 coat of interior sealer of specified brand on prepared surface; then applying 1 coat of interior putty of specified brand for levelling, spot filling, crack filling and cutting by sand paper/zero water paper; applying 3 coats of texture paint; 1st coat on prepared surface, then applying 1 texture coat on the 1st coat and finally applying 1 top coat on the texture coat upto desired finishing by brush/roller/spray machine etc. with necessary scaffolding; all complete in all floors and accepted by the Engineer-in-charge.	90.00	Sqm		
	HAND POLISH WORKS				
21	French polishing by three coats over a coat of priming including putty, cleaning, finishing and polishing with sand paper etc. all complete in all floors and accepted by the Engineer-in-charge.	650.00	Sqm		

SL.	DESCRIPTION	Quantity	Unit	Rate BDT	Amount BDT
E.	RENOVATION ITEMS: INTERNAL PARTITION, WOODEN CLADDING, GLASS PARTITION, LOUVER PARTITION, GLASS DOORS & CEILING WORKS.				
	WOODEN DROP PARTITION FOR GLASS PARTITION AND GLASS DOOR FIXING PURPOSE.				
22	Supply, fitting & fixing of Wooden Drop Partition to be made with 12mm thick white partex board & fixed over framing by 2"x 2" gorjon wooden frame with paint work, with best quality hardware materials etc. all complete as per direction and full satisfaction of the Consultant / Project-in-Charge.	10.31	Sqm		
	LOUVER PARTITIONS				
23	Supply, fitting & fixing of Wooden Louver Partition to be made with double layer 18mm thick veneer partex board & fixed over framing by 2"x 2" gorjon wooden frame, with best quality all complete as per direction and full satisfaction of the Consultant / Project-in-Charge.	33.06	Sqm		
	ACOUSTIC SOUNDPROOF FOLDING PARTITIONS				
24	Supply, fitting & fixing of Acoustic Soundproof Folding Partition to be made with 12mm thick Acoustic board & fixed over framing by 2"x 2" gorjon wooden & SS frame, with best quality hardware materials etc. all complete as per direction and full satisfaction of the Consultant / Project-in-Charge.	37.55	Sqm		
	DECORATIVE WOODEN FALSE CEILING				
25	Supplying, fitting and fixing plain particle board ceiling (complying unit wt 499 to 550 kg/m³, bending strength 0.35 N/mm², max swelling 8%, moisture content not more than 10%), of 12 mm thick with best quality and well seasoned Garjan wood frame of section 75 mm x 38 mm at 600 mm x 600 mm in grid suspended from ceiling or roof or beam by 12 SWG double ply G.I. wire fixed to the ceiling by rowel plug, screws, hooks, nails etc, maintaining straight lines and desired finished level at bottom face including vertical strut as required, cutting holes in slabs or beams by electric drill machine and mending good the damages, if any during execution of the work, also including cost and carriage of all materials, accessories, labour for installation, electricity charge, scaffolding, screws, nails, painting 2 coats over a coat of priming with best quality and approved colour synthetic enamel paint etc. all complete, as per drawing design and accepted by the Engineer-in-charge. (All sizes of wood are finished)	21.65	Sqm		
	DECORATIVE BEAM & COLUMN CLADDING				

SL.	DESCRIPTION	Quantity	Unit	Rate BDT	Amount BDT
26	Supply, fitting & fixing of wooden beam & column cladding made of 1/2" thick white partex board & Veneer board (if required) over 2" x 2" garjon wooden frame work with screw, Neil, and royal plug & white glue. including necessary accessories etc. all complete as per direction and full satisfaction of the Consultant / Project-in-Charge.	110.00	Sqm		
	LIGHT BOX				
27	Supply, fitting & fixing of light box suspended from existing R.C.C. slab (as per direction) with screw, Neil, and royal plug & white glue. including necessary accessories etc. all complete as per direction and full satisfaction of the Consultant / Project-in-Charge.	169.00	RM		
	SANDWICH PARTITION				
28	Supply fittings & fixing sandwich panel work made by HDF/PVC Wood with SS frame including necessary locking system & other accessories. All Complete as per design & direction of the Architect & Consultant-in-charge.	36.90	Sqm		
	DECORATIVE WALL CLADDING				
29	Supplying, fitting and fixing 12 mm thick particle board in wall with best quality and well seasoned Garjan wood frame of section 75 mm x 38 mm at 600 mm x 600 mm in grid, fitted and fixed to wall by plugs, nails, screws etc. including treatment of inner surface with termite and damp proofing agent maintaining leveled and finished exposed faces including. making holes in wall and mending good the damages, if any during execution of the work, also including cost and carriage of all materials, electricity, accessories, labour for installation, scaffolding, screws, nails etc. including french polishing by 3 coats over a coat of priming etc. all complete as per design, approved sample and accepted by the Engineer-in-charge.	51.95	Sqm		
	WRITING BOARD				
30	Supply, fitting & fixing of Writing Board Made of Special Glass with back side white paper including 1/2" thick White partex board over 2" x 2" garjon wooden frame work with screw, Neil, and royal plug & white glue. including necessary accessories etc. all complete as per direction and full satisfaction of the Consultant / Project-in-Charge.	17.59	Sqm		
	10 MM GLASS PARTITION				
31	Supplying, fitting and fixing 10 mm thick clear glass partition with 44 mm, 44 mm, 1.5 mm aluminium box, protector bit (single), protector bit (double) including all accessories etc. all complete and as per drawing and direction of the Engineer-in-charge.	42.00	Sqm		
	10mm TEMPERED GLASS DOOR				

SL.	DESCRIPTION	Quantity	Unit	Rate BDT	Amount BDT
32	Supplying, fitting and fixing 10 mm thick clear tempered glass door including all accessories, 1 set floor mounted auto door closure, special quality 2 nos. clamping devices, 1 set locking device, top hinge and handle etc. complete in all respect as per drawing and direction of the Engineer-in-charge.	20.87	Sqm		
	UPVC DOOR FRAME				
33	Supplying fitting and fixing of uPVC plastic door frame with door shutter having specific gravity 1.35 - 1.45, and other physical, chemical, thermal, fire resistivity properties etc. as per BSTI approved manufacturer standards or ASTM, BS/ISO/IS standards fitted and fixed in brick wall/ R.C.C wall with 6 Nos. GI clamp, 4 no's inner joint GI clamp, 2 nos. outer GI joint clamp, 16 nos. rivet making necessary grooves and mending good the damages, finishing, curing, carriage etc. complete in all respect accepted by the Engineer-in-charge.	29.00	Meter		
	UPVC DOOR SHUTTER				
34	Supplying fitting and fixing of uPVC plastic door frame with door shutter having specific gravity 1.35 - 1.45, and other physical, chemical, thermal, fire resistivity properties etc. as per BSTI approved manufacturer standards or ASTM, BS/ISO/IS standards fitted and fixed in brick wall/ R.C.C wall with 6 Nos. GI clamp, 4 no's inner joint GI clamp, 2 nos. outer GI joint clamp, 16 nos. rivet making necessary grooves and mending good the damages, finishing, curing, carriage etc. complete in all respect accepted by the Engineer-in-charge.	4.00	no's		
	COLLAPOSIBLE GATE				
35	Manufacturing, supplying, fitting and fixing collapsible gate of any design and shape made of 20 mm x 20 mm x 3 mm M.S. angle placed @ 112 mm c/c vertically and connecting the same with each other by 20 mm x 3 mm M.S flat bar scissors 525 mm/ 600 mm long provided in 3 rows including cutting the different M.S. members to required sizes, fabricating, welding, riveting with required size rivets, providing required size wheels, pulling handles on both sides, suitable locking arrangement, electrodes, grease and finally placing the same in position in between 2 (two) nos. 50 mm x 50 mm x 6 mm M.S. tee rail made by welding 2 nos. 50 mm x 6 mm M.S. flat bar fitted and fixed at top and bottom with R.C.C. lintel/roof slab, floors and side wall with required Nos. 150 mm to 225 mm long 38 mm x 6 mm M.S. flat bar clamps one end welded with the gate member and the other end bifurcated and embedded in C.C. at the respective point including cutting holes and mending good the damages by pouring concrete (1:2:4) into the holes and finishing, etc complete, painting 2 (two) coats with approved best quality synthetic enamel paint over a coat of anticorrosive painting, both end carriage, including greasing, electrodes, curing etc. complete as per drawing and design and accepted by the Engineer-in-charge. (Rate is excluding the cost of paint).	7.60	Sqm		
	HORIZONTAL ZEBRA BLIND:				

SL.	DESCRIPTION	Quantity	Unit	Rate BDT	Amount BDT
36	Supplying, fitting and fixing of horizontal zebra blind made with polyester fabrics, synthetic net with 3 inch vinyl/upvc coated strips with supply of all materials such as head rail, bottom rail, rod tilt, head cap, bottom cap, gear box, stick, support and cap, cord drum and support, bracket, cord lock, cord equalizer, top holder, ladder, cord, handling cord and aluminum foils etc. all complete and accepted by the Engineer-in-charge.	128.35	Sqm		
	FROSTED PAPER WORKS				
37	Frosted Paper on 10mm and 5mm Glass Surface; all complete as per direction and full satisfaction of the Consultant / Project-in-Charge.	45.42	Sqm		
	LOGO WORK				
38	Supply, fitting & fixing LOGO incl. necessary electrical light arrangements, etc.; all complete as per design, direction and full satisfaction of the Consultant / Project-in-Charge.	1.00	Job		
F.	Sanitary & Plumbing Works				
	COMMODE WITH LOW DOWN:				
39	Supplying, fitting and fixing of European type glazed porcelain combi closet, including plastic seat cover, cistern system , preparing the base with cement concrete and with wire mesh or rods if necessary, in all floors including making holes wherever required and mending good the damages and fitting, fixing, finishing etc. complete with all necessary fittings and connections approved and accepted by the Engineer- in- charge.	9.00	Set		
	COUNTER BASIN:				
40	Supplying, fitting and fixing of white glazed vitreous W/H wash basin excluding pedestal , fitting, fixing the same in position with heavy type C.I. Brackets. 30 mm dia PVC waste water pipe with brass coupling (not exceeding 750 mm in length), basin waste with chain plug including making holes in walls and floors and fitting with wall, screws and mending good the damages, finishing etc. all complete approved and accepted by the Engineer-in-charge.	6.00	Set		
	STANDING URINAL:				
41	Supplying, fitting and fixing of glazed vitreous standing bowl urinal , fitting, fixing the same in position after making holes in walls and floors, providing 32 mm dia plastic waste pipe with brass coupling up to grading below, 12 mm dia plastic connection pipe with brass coupling, 12 mm dia brass stop cock including mending good the damages with cement mortar (1:4) etc. all complete approved and accepted by the Engineer- in- charge.	2.00	Set		
	TOWEL RAIL:				

SL.	DESCRIPTION	Quantity	Unit	Rate BDT	Amount BDT
42	Supplying, fitting and fixing of super quality C.P. towel rail of 600 mm long and 20 mm in dia with C.P. holder including making drills in walls and mending good the damages with cement mortar (1:4) etc. all complete approved and accepted by the Engineer- in- charge.	3.00	No's		
	Paper Holder:				
43	Supplying, fitting and fixing of special toilet paper holder with cover of size (150 mm x 150 mm x 126 mm) including making drills in walls and mending good the damages with cement mortar (1:4) etc. all complete approved and accepted by the Engineer- in- charge.	9.00	No's		
	Hand Dryer				
44	Supplying, fitting and installation of automatic hand dryer of high speed, energy efficient, rapid drying, automatic sensor, adjustable speed and sound control, adjustable heat control, electric hand dryer; surface mounted or semi-recessed which can eliminate over 99% of airborne bacteria and particles as small as 0.3 microns with the removable Super Filter System and it shall be powered by 220v AC supply/ batteries and shall operate automatically from IR sensor that shall activate it when hands are placed in sensor zone etc. all complete accepted by the Engineer- in- charge.	3.00	No's		
	Automated Liquid Soap Dispenser				
45	Supplying, fitting and fixing of Automatic liquid soap dispenser to hold and dispense up to min 600 ml of liquid and lotion soaps, synthetic detergents and antibacterial soaps. Dispenser shall be powered by batteries and shall operate automatically from IR sensor that shall activate soap dispensing when hands are placed in sensor zone. Sensor detection range shall be adjustable by owner. Dispenser shall pump a drop volume of 0.8 ml to 1.0 ml of soap during each activation. A tamper resistant soap level-viewing window shall be provided. Unit shall have a swing open body secured with side-mounted lock that is opened with special key provided, all complete and accepted by the Engineer- in- charge.	6.00	No's		
	COMMUNE SHOWER:				
46	Supplying and fitting-fixing hand / push shower for ablution including holder etc. all complete approved and accepted by the Engineer- in- charge.	9.00	No's		
	SS SINK				
47	Supplying, fitting and fixing of double bowl stainless steel sink with sink tray with heavy type CI or steel brackets, 12 mm dia C.P. chain plug, 40 mm dia C.P. waste, 40 mm dia PVC waste pipe with brass coupling (750 mm length) including making hole in walls and floors and mending good the damages, finishing etc. all complete approved and accepted by the Engineer-in-charge.	1.00	No's		
	MIRROR:				

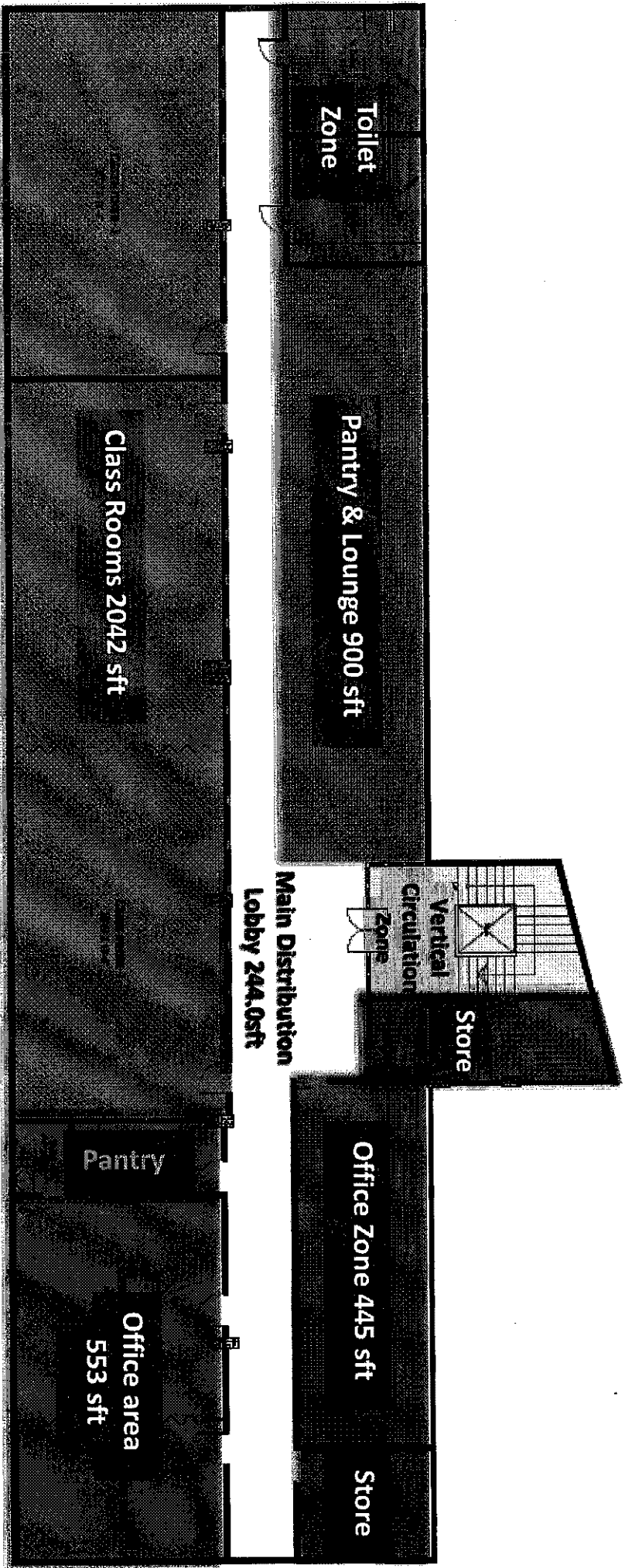
SL.	DESCRIPTION	Quantity	Unit	Rate BDT	Amount BDT
48	Supply, fitting & fixing of Mirror of best quality with necessary aluminum framing & hardware etc. All complete.	5.62	Sqm		
	Sanitary fittings				
49	Supplying, fitting and fixing of Automated Sensor type basin Pillar cock with all necessary hardware and consumables approved and accepted by the Engineer.of following type	6.00	No's		
50	Supplying, fitting and fixing of angle stop cock etc. complete approved and accepted by the Engineer- in-charge.	22.00	No's		
51	Supplying, fitting and fixing of best quality faucets etc. complete approved and accepted by the Engineer- in-charge.	6.00	No's		
52	Supplying, fitting and fixing of best quality concealed moving sink cock etc. complete approved and accepted by the Engineer-in-charge.	1.00	No's		
53	Supplying, fitting and fixing of 125 mm dia stainless steel floor grating in traps or in drains including making holes in walls/floors and mending good the damages with cement mortar (1:4) etc. all complete approved and accepted by the Engineer- in- charge.	15.00	No's		
	Valves works Supplying, fitting and fixing of best quality G.I. gate valve with sealant etc. complete approved and accepted by the Engineer- in- charge.				
54	19mm dia pitch Valves	15.00	No's		
55	25mm dia pitch Valves	17.00	No's		
56	38mm dia pitch Valves	10.00	No's		
	Supplying, fitting and laying up to depth of invert 100 mm inside dia best quality uPVC pressure soil pipe having specific gravity 1.3 -1.45, and other physical, chemical, thermal, fire resistivity properties etc. as per BSTI approved manufacturer standards or ASTM, BS/ISO/IS standards fitted and fixed in position with sockets, bends, with all accessories such as Round grating/domed roof grating etc. complete approved and accepted by the Engineer- in- charge.				
57	100mm dia uPVC pipe	300.00	Meter		
58	Supplying different inside dia best quality uPVC clean out / trap having specific gravity 1.35 -1.45 and other physical, chemical, themal, fire resistivity properties etc. as per BSTI approved manufacturer standards or ASTM, BS/ISO/IS standards, fitting and fixing in position etc. complete approved and accepted by the Engineer- in- charge.	142.00	No's		

SL.	DESCRIPTION	Quantity	Unit	Rate BDT	Amount BDT
	Supplying different inside dia best quality uPVC pressure pipe for water supply having specific gravity 1.35 - 1.45, and other physical, chemical, thermal, fire resistivity properties etc. as per BSTI approved manufacturer standards or ASTM, BS/ISO/IS standards fitted and fixed in position with sockets, bends, with all accessories such as Round grating/domed roof grating, bends, sockets etc. approved and accepted by the Engineer-in-charge.				
59	19mm dia pipe	420.00	Meter		
60	25mm dia Pipe	320.00	Meter		
61	38mm dia Pipe	290.00	Meter		
	OVER HEAD WATER TANK (1500 liter capacity)				
62	Supplying, fitting and fixing of food graded plastic overhead water reservoir tank including all necessary fittings, hardware and consumables etc. all complete approved and accepted by the Engineer- in- charge.	1.00	Each		
	WATER PURIFICATIONS				
63	Supplying, fitting, fixing of foreign made best quality Reverse Osmosis Water Purifier (Kent / Unilever / Vapor water purifier or equivalent brand) for purification of water by reverse osmosis system to have potable water conforming WHO standard and Bangladesh concentration parameters including installation charge, carriage, sundries etc. complete approved and accepted by the Engineer- in- charge.	1.00	Each		



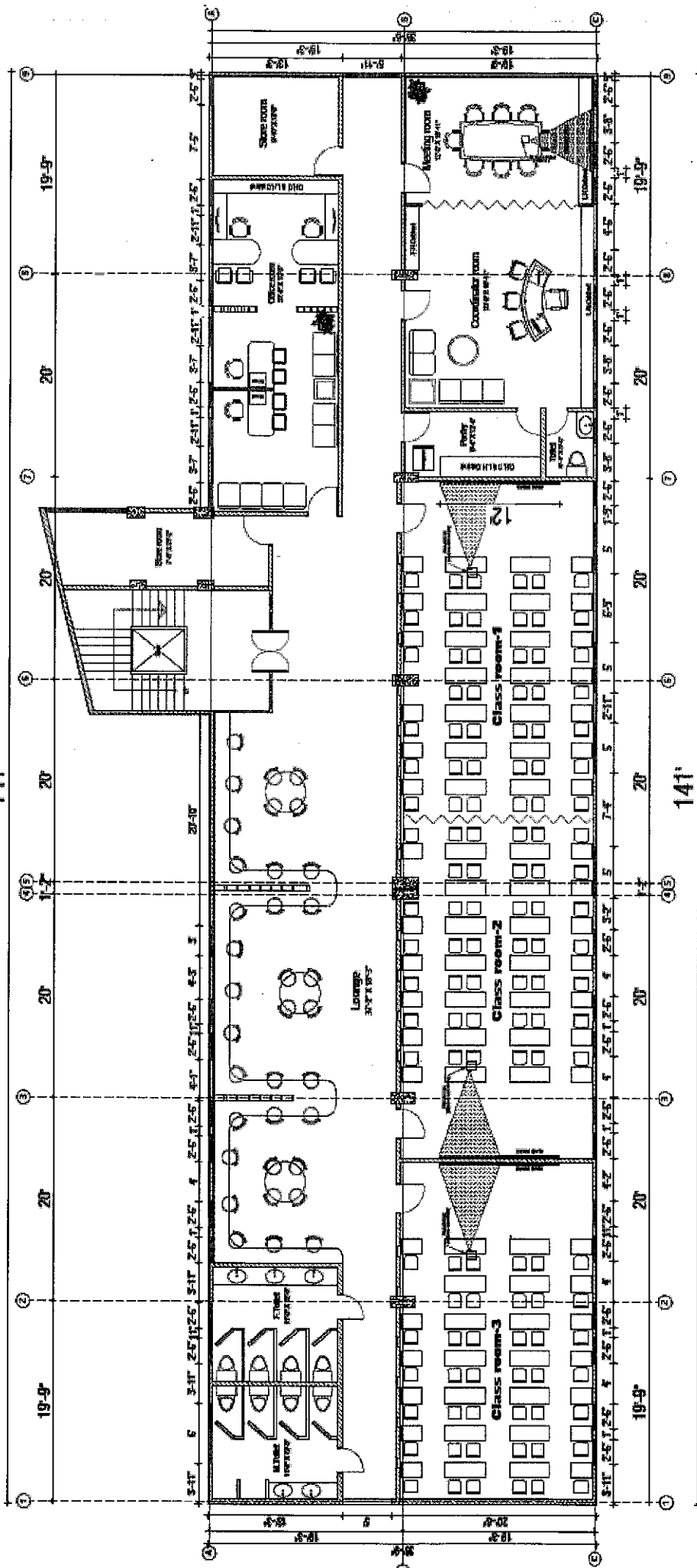
SECTION 3 - DRAWINGS





Basic Zoning for 1ST Floor

141'



Proposed Layout of IBA Interior- 5763sft
SCALE: $\frac{3}{32}'' = 1'-0''$

Basic Planning for 1st Floor

FORM OF QUOTATION

Date:

To

Executive Project Director
Skills for Employment Investment Program (SEIP) Project
Probashi Kallyan Bhaban (Level 16)
71-72 Old Elephant Road,
Eskaton Garden, Dhaka-1000
Phone : 55138753-5 (PABX), Fax: 55138752
E-mail: zahid63@yahoo.com

We offer to execute the Renovation Works (Civil and Plumbing Part) of Classrooms, 1st Floor, Library Building for SEIP Project, IBA, Package no. W-IBA-01 in accordance with the Conditions of Contract (in the Form of Contract) accompanying this Quotation for the Contract Price of _____ (amount in words and numbers) (Bangladesh Taka. We propose to complete the Works described in the Contract within a period of _____ months from the Date of Signing of the Contract.

This Quotation and your written acceptance will constitute a binding Contract between us. We understand that you are not bound to accept the lowest or any Quotation you receive.

We hereby confirm that this Quotation complies with the Validity of the Offer required by the proposal documents.

We have not been associated with the firm that prepared the design and specifications of the contract that is subject of this request for quotation.

We are not in the ADB sanctions list.

Authorized Signature: _____
Name and Title of Signatory _____

Name of Contractor: _____
Address : _____

Phone Number : _____

Fax Number, if any _____
Email address (optional) _____

FORM OF CONTRACT

Name of Country: Bangladesh

Project Name: Skills for Employment Investment Program (SEIP) Project

Name of Contract: Renovation Works (Civil and Plumbing Part) of Classrooms, 1st Floor, Library Building for SEIP Project, IBA.

Contract Number : W-IBA-01

This Contract is made this _____ day of _____ 2021_ between Skills for Employment Investment Program (SEIP) Project on the one part (hereinafter called the Employer) and _____ (hereinafter called the Contractor) on the other part.

Whereas the Employer has called for quotations for (name and identification number of the contract) and the Contractor has submitted a quotation for the above work and the Employer has accepted the Contractor's Quotation dated _____ for the execution and completion of such works and the remedying of any defects therein.

Now this Contract witnesses as follows:

1. The Contractor hereby covenants to execute the works fully described in the Activity Schedule (or Bill of Quantities) included in the Contractor's Quotation which constitute an integral part of this Contract (as Annex 1) in a professional and workmanship like manner in accordance with the following Conditions of Contract:

- (a) Remedy all defects within 20 days of notification by the Engineer in charge during the period of execution of the contract and thereafter defects notified within the defect liability period;
- (b) The Employer reserves the right to terminate the contract due to unsatisfactory performance 15 days after giving a written notice. If the Contract is frustrated by the outbreak of war or by any other event entirely outside the control of either the Employer or the Contractor, the Engineer in charge shall certify that the contract has been frustrated. In such an event, both the Employer and Contractor will have a right to terminate the contract by giving 15 days' notice to the other party without any financial repercussions on either side. Payments after termination or frustration shall consider the value of work completed and materials delivered by the Contractor, and the advance payment made by Employer;
- (c) All material and construction equipment on site, temporary works, and Works shall be deemed to be the property of the Employer if the contract is terminated due to fault of the Contractor;
- (d) The Contractor will in all cases abide by the directions of the Engineer in charge.
- (e) The Contractor shall submit to the Engineer in charge, a program within 5 days after signing the contract describing general methods and schedule to complete the works;
- (f) Contract completion period 2 (months) after signing of the contract.
- (g) No part of the works shall be subcontracted without prior approval of the Employer.
- (h) New items of work performed as ordered by the Engineer in charge will be paid at the mutually agreed rate and in case of any disagreement between the Contractor and the Engineer in charge the latter will fix the unit rates that will be binding on the Contractor;
- (i) The Law governing the contract shall be applicable laws of Bangladesh;
- (j) The Contractor shall be responsible for the safety of all the activities on the Site.
- (k) During execution of works the Engineer-in-charge, Mr. Badruzzaman, Civil Engineer, SEIP will carry out inspection of works at site to verify that works are executed by the Contractor in accordance with the specifications and required quality as per specifications. Engineer in charge will reject works not performed to the required specifications and the Contractor shall take immediate actions to rectify all defects in accordance with subparagraph (a) above;

- (l) Either party may terminate the Contract by giving a 15days' notice to the other for unforeseen events such as wars and acts of Gods such as earthquake, floods fires etc. In such case the payments will be made to the date of termination of contract;
 - (m) The Contractor is responsible for all taxes, duties. levies, etc. in accordance with the laws of the Peoples Republic of Bangladesh; and
 - (n) The disputes between the Employer and the Contractor arising between them under or in connection with the Contract shall be resolved amicably. In the event the dispute remains unresolved either party may refer the dispute to President, Institute of Engineers, Bangladesh in accordance with the law governing the contract.
2. In consideration thereof the Employer covenants to pay the Contractor the contract price of _____ (in words and figures) in the following manner and installments:
- i. 100 percent Payment shall be made upon completion of the works certified by the SEIP Engineer in Charge based on the volume of the work actually performed, calculated on the basis of unit prices and quantities. Payment may be made to the Contractor within 30 days of the date of the payment request submitted by the contractor has been certified by the Engineer in Charge.
 - ii. Employer shall retain five (5) percent as Retention Money from the payment due to the Contractor. The Retention Money shall be returned to the Contractor within twenty-one (21) days after expiry of the Defects Liability Period. The Employer will pay the retained amount to the contractor when an unconditional Bank Guarantee is furnished for that amount.
3. The defect liability period will be 12 months after taking over of completed works by the Employer.

In witness whereof the parties thereto have caused this Contract to be executed the day and year first before written.

Signature and seal of the Employer:
FOR AND BEHALF OF

Signature and seal of the Contractor:
FOR AND BEHALF OF

Name of Authorized Representative

Name of Authorized Representative



FORM of LETTER OF ACCEPTANCE

Date: _____

To: _____ *[Name and address of the Contractor]*

Dear Sir or Madam,

This is to notify you that your Quotation dated _____ for execution of the *[name and number of the Contract]* for the Contract price of _____ *[amount in words and figures]*, as corrected and modified in accordance with the Request for Quotation has been accepted by us.

You are also requested to sign the attached contract form and commence construction of the Works not later than _____, and ensure the completion of the Works within the construction period specified in the contract.

For and on behalf of the Employer:

Authorized Signature: _____

Name of Signatory : _____

Title: _____

